



THE WOODPECKER

Snippets & Offcuts

- **Christmas in July Social Wednesday 27th July 2022**

Reminder – don't forget to register for the "Christmas in July" luncheon on the 27th July 2022 at 12.30pm at the Rye RSL. For a RSL members, the cost of the dinner is \$25 or, for non RSL members \$27 (payable on the day). Limited gluten free and vegan options will be available. If you would like to attend, there is an attendance sheet on the noticeboard at the registration desk or call Dennis Conner on 5985 7788.

- **2022 AGM Wednesday 10th August 2022**

Covid permitting the 2022 Annual General Meeting will be held on Wednesday 10th August. The nomination form is on the Notice Board at the workshop inviting members to stand for the committee. This is your opportunity to contribute to the running of the club.

Working Bee a great success

The working bee at the clubhouse on the 2nd July 2022 was very well attended – some 16 or so willing workers. A big thank you to all involved.



Projects within the Club

1. Restoration of Portable Writing Desk.

Noel Archdall has recently completed the restoration of a somewhat unusual item – a portable writing desk.

There is just the one photo of the item in its original condition. With a great deal of effort of Noel's part, a good deal of help from Gerry Gililand in restoring the hinges and a catch. And much help and advice from Rob Oram with making repairs and French polishing, Noel has ended up with a very nicely restored piece of antique furniture. Note the secret compartment in photos 3 and 4.

This item is a clear example of one of the many benefits of membership of this club – the extensive amount of help, guidance and advice available (and freely given) from other members.



The original condition of the writing desk.

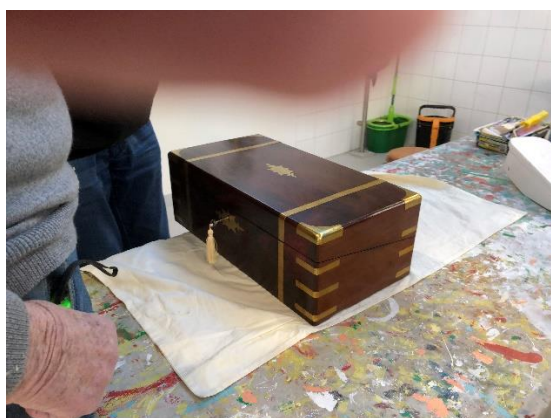


Photo 1 – completed restoration



Photo 2 – the interior work surface



Photo 3 – interior storage compartments



Photo 4 – the secret compartment door

2. Replica of the Wheel of the T.S.T. Lyttelton II

Leigh Hitchcock has embarked on a challenging project – to build a replica of the wheel of the harbour tug, T.S.T. Lyttelton II. His original thinking was to build a spinning wheel but this changed when visiting the National Steam Museum in Scoresby where the exhibition of the tug’s engine room included the wheel. A scaled down copy of the wheel seemed a far superior challenge.

The T.S.T. Lyttelton II was a harbour tug with a length of 38 metres, beam of 9 metres, draught of 4 metres and displacement of 604 tonnes. Her twin props were powered by two triple expansion steam engines each with an indicated horsepower of 625. Her two scotch marine boilers were coal burning with forced draught.

At present, the wheel is a ‘work in progress’ but Leigh is well on the way to completing a very worthwhile project. And he has generated some firewood along the way (much to his chagrin 😊).

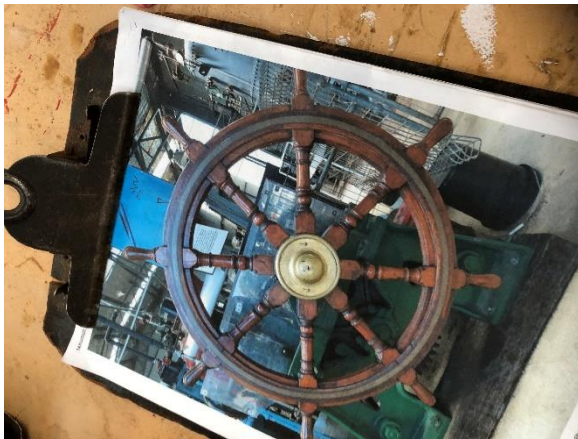


Photo 1 – The ‘template’ of the wheel.



Photo 2 – Centre of the wheel complete



Photo 3 – Spokes coming along nicely.

Personality this Month – John Feeley

I first met John when I joined Toymakers and worked with him building the flat-pack Dolls Houses. What a great guy and a pleasure to work with. And I learnt a lot. John joined Woodworkers of Southern Peninsula (WoSP) in 2013. His only prior lathe work was on a metal lathe some 40 years ago. He started in the toy making group a couple of years after joining WoSP. Like many, he has turned a lot of pens over the years – including pens which he has sold at markets for good prices which reflected the cost of the raw materials. He still has many blanks at home. He has made a few other items (bowls, etc).



His rocking horse project came to halt when he realised he had made two left hind legs. For two years it has been sitting on his work bench awaiting that other hind leg followed by the sanding, etc. Such a project has attracted many in WoSP to try their skills – there now being at least two sets of templates for the same rocking horse.

John is a Latrobe Valley man - born in what was Yallourn and grew up in Morwell and moved to Moe after getting married. He eventually moved to Melbourne. His working life started with the SEC – as an Apprentice Electrician. After 12 months, John aimed higher, got an SEC scholarship and went back to school to train as a technician. This led to work on the electronic and computer-based control systems in the open cut coal mines (at power stations throughout the Latrobe Valley). Some years later, he landed a job training Technicians in the SEC Training Centre. Following this, he transferred to a job at the gas fired power station at Jeeralang for several years before taking a redundancy and moving to Melbourne.

In Melbourne, John ended up in a computer training centre presenting courses on spreadsheet, database, graphics and word processing programs. This led to a training job with Drake International in Perth where he moved into programming. Later, John transferred back to Melbourne with Drake.

A few years later, John left Drake and started out as an independent contractor developing data bases and helping out with spreadsheets, etc. The Department of Justice was his next job – working on an Asset Management System. This took him into many of the Victorian prisons: an interesting experience during which he was pleased to be just a visitor. Following this, a position came up with the (Victorian) Department of Sustainability as an Assistant Project Manager on a project to develop

their Asset Management System. Toward the end of his time with this Department, John moved to St Andrews Beach. He initially commuted 5 days a week – drove to Frankston then a train to Town and return which proved to be costly and time-consuming. After working on his boss for a while, he convinced the Department to allow him to work from home two days a week. This was somewhat ‘ground breaking’ as it was well before Covid changed the way the workplace was viewed.

John recalls with pleasure, the cruise he took to Antarctica. Each day was spent on the ice. A couple of highlights he recalls – an un-aided slide down the ice on a mountain and the ultimate challenge of a cold-water swim (the eyes water at that one). The trip back through the Drake Passage was one to remember with winds at the high end of the Beaufort Scale and passengers ordered to their cabins.

The house at St Andrew’s Beach was initially planned as a holiday house only but it is now where he has retired. The area where he lives is nice and quiet with a six{?} minute walk to what is effectively, the Rye Surf Beach. The St Andrew’s Beach is not much further away. The sound of the ocean can be heard from his house which sits on quite a large (3/4 acre) block. Lots of grass and trees surround the house. This brings in birds of all kinds including recently – ducks. Magpies have been consistent visitors – could be the feed perhaps. John has the classic ‘home workshop’ problem – not big enough in spite of quite generous dimensions. Seems there must be a natural law – ‘stuff’ will expand to over-fill the available workshop space. Or is this just being a ‘collector’.

Not being a surfer at any time in his life, John has resorted to the Yawa pool in Rosebud where he is building endurance – the objective being a kilometre non-stop. Currently he is at the 750-metre mark – with a ‘breather’ or two. Plus, he is putting in some time in the Gym.

Currently, John is experimenting with resin timber work. He is producing some nice work – but a bit wary of the costs involved.

Keep smiling.....

My husband and I went through the McDonald's driveway window and I gave the cashier a \$5 bill. Our total was \$4.25, so I also handed her 25c.

She said, 'you gave me too much money.'

I said, 'Yes I know, but this way you can just give me a dollar back.'

She sighed and went to get the manager who asked me to repeat my request.

I did so, and he handed me back the 25c, and said 'We're sorry but we don't do that kind of thing.'

The cashier then proceeded to give me back 75 cents in change.

Do not confuse the people at Mac D's.

We had to have the garage door repaired

The repairman told us that one of our problems was that we did not have a 'large' enough motor on the opener

I thought for a minute, and said that we had the largest one made at that time, a 1/2 horsepower

He shook his head and said, 'You need a 1/4 horsepower.

I responded that 1/2 was larger than 1/4 and he said, 'NOOO, it's not. Four is larger than two.'

We haven't used that repairman since...

I live in a semi - rural area.

We recently had a new neighbour call the local city council office to request the removal of the DEER CROSSING sign on our road.

The reason: 'Too many deer are being hit by cars out here! I don't think this is a good place for them to be crossing anymore.'

My daughter went to a Mexican fast food and ordered a taco.

She asked the person behind the counter for 'minimal lettuce.'

He said he was sorry, but they only had iceberg lettuce.

I was at the airport, checking in at the gate when an airport employee asked, 'Has anyone put anything in your baggage without your knowledge?'

To which I replied, 'If it was without my knowledge, how would I know?'

He smiled knowingly and nodded, 'That's why we ask.'