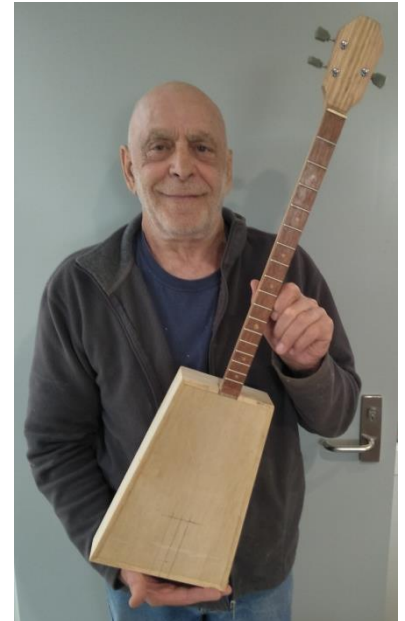




# THE WOODPECKER

## Snippets & Offcuts

- Reminder of our new session - making a wooden 3 string acoustic guitar led by John Andrews. This session started on Tuesday 3<sup>rd</sup> May, the afternoon session. See our April Woodpecker for further details.
- The club still has a couple of wine barrels for sale. At the moment they are full barrels but can be cut in half. \$80 full barrel, \$40 half barrels
- Planning is under way for a regular (monthly – last Friday of each month) social morning tea at the workshop. This is aimed at encouraging members to come along and meet with other members, have a coffee/tea and a chat with other members.



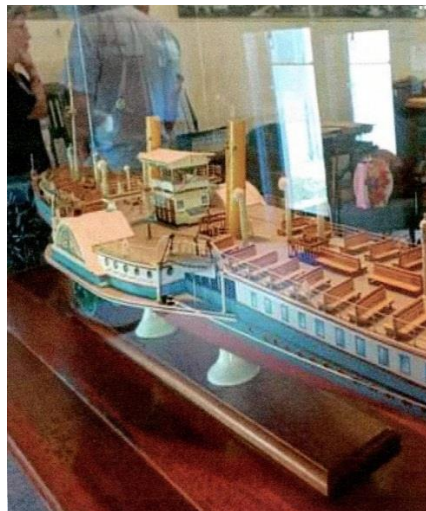
## Gerry Gilliland donates his model of the Hygeia

Friday evening 25<sup>th</sup> March 2022, ‘...the Nepean Historical Society, at Sorrento Museum, celebrated the donation of a beautiful model of the Paddle Steamer Hygeia.

Come and see this detailed model of the ship.

Local Gerry Gilliland created the accurate and elegant model over 4 years. Gerry was a trained tool maker and professional industrial model maker in research and development.

Hygeia was named for the Greek goddess of health and cleanliness. Coal driven, built in Glasgow in 1890, considered the largest and fastest steamer then afloat. Commenced service in Port Phillip in December 1890 and carried millions of passengers until 1931. Now in the ships’ graveyard outside Port Phillip Heads.’ (Quote curtesy of the Nepean Historical Society).



## Toymakers 'on a roll'

The toy makers are off to a great start this year – see below for some of the items. It's the start of May and we have already started painting. Gavin Davis states: 'Once again, the Club Sponsors have stepped up – for toys, its Bunnings and Dulux; both of whom have made very substantial contributions of MDF and paint'. New members (Romí and Sam) are enjoying the challenge – thanks guys. And there is still room for more toymakers – give it some thought.



Trikes



Helicopters



Yachts



Crocodiles



Lunch Break



Drilling Quoits



More Quoits



Doll's Furniture



Flat-pack Doll's Houses

**Welcome to our new members**

Dennis Carr (re-joining – welcome back)

We look forward to enjoying our time with you.

## Personality this Month – Gordon Waddingham (Life Member)

by Allan Brookes

Gordon's time with the Woodworkers of the Southern Peninsula (WoSP) goes back many moons to 2004 – not all that long after the group was formed. He joined the Committee in 2006 (and remained a committee man for some 10 years) when sheds at the old location by the Council offices were being added. Good relations with the Council were (and remain) important – 'relationship cultivation' being the name of the game. And some interesting innovation involving roofing and a fence. Gordon had worked with concrete during his working life, a skill of value to the Club at the time. Also important was to have assistance only by those with concreting experience – something Gordon enforced with firmness. In later years, Gordon has been building and turning segmented bowls with a great deal of success. For his valued contribution to the club, Gordon was made a Life Member in 2010.



But going back to where it all started – in the Wantirna area where as a youngster, he swam in the Dandenong Creek near the Burwood Highway and watched platypus. In those days, the eastern suburbs from Doncaster down to Dandenong was farms and orchards – lots of orchards. Upwey High School is Gordons's alma mater. Box Hill Tech is where Gordon completed his apprenticeship.

Gordon's father was a builder thus Gordon ended up as a builder. At seventeen, Gordon joined his brother doing piece work and never again worked for a boss. Business was good – and, with hard work, so was the money. The focus initial was on domestic dwellings. Of course, there were no prefabricated frames, roofing etc. era in those days.

A group of fruit growers from the eastern suburbs visited Europe / USA coming back with the concept of 'controlled atmosphere' cool storage for the long-term storage of apples and pears. This fruit could now be sold 'fresh' year-round. Gordon and his brother had built a reputation with these growers and now had the opportunity to build these special rooms (for big money). For Gordon, the challenge was to build air-tight rooms (or as near as possible to air tight). An engineer built the machine needed to lower the oxygen in the rooms from 21% to 1% plus reduce/eliminate other gases as well. Building these rooms (including insulation) became the mainstay of their business. Engineers followed the build to install the ammonia coolers, plus electricians and plumbers and finally the installation of the 'air conditioning plant'. Their first cooling chamber was found wanting when a vacuum cleaner was used to test 'air tightness' – went fine for a start but then 'whoomph'; modifications/repairs needed. Some of those cool stores have been consumed by 'urban sprawl' but many are still in use.

Farmers are a tough breed and accustomed to failure. Gordon recalls clearly, the agony on the face of a farmer whose near-ripe crop was wiped out by hailstorm. A year's work and income gone in the space of a few minutes of hailstorm.

Probably the most memorable holiday Gordon and wife have been on was a cruise up the Inside Passage to Alaska. On this cruise, they took a trip ashore; helicopter scenic flight over the glaciers followed by a journey on a dog sled (Huskies and all). Fascinating adventure.

The year 2000 saw Gordon selling up and moving to his beach house at Rye. Soon after, circumstances changed, the house was sold and they moved to Rosebud. Behind the police station, they found an

established property - Gordon had no desire to build again so they bought and moved in some 20 years ago. Recently, his wife has had to move into aged care. The house was now bigger than needed so he sold up and moved to the Village Glen where he is very happy.

Gordon has retained a small workshop at home (lathe, etc.) but continues to come to the WOSP workshop for timber preparation, machining, etc.

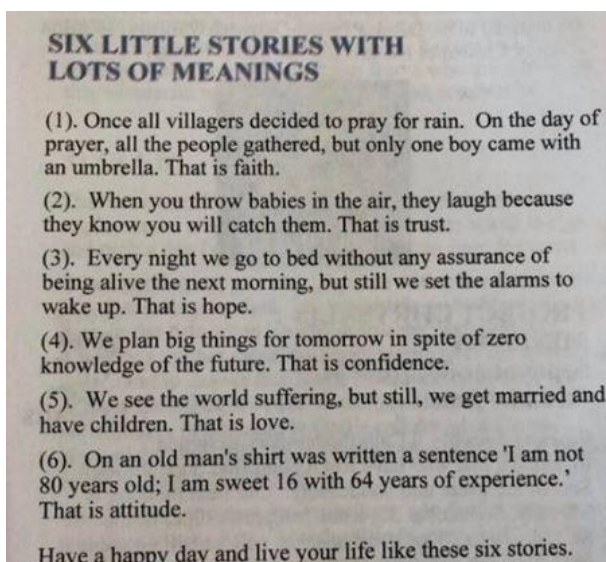
In the new workshop, Gordon has contributed by way of internal walls – to close off the toy area, closed room for the security equipment (the “office”) and the compound saw bench.

Finally, like many tradesmen – injury is one of the hazards of life. Sky lights seem to be a common hazard - he fell through one and landed on the sheet of corrugated iron that he had been cutting. He also sports a short thumb from a ‘ripping’ accident – after being re-attached, the thumb is working fine but is shorter than the other.

Now for some segmented bowl lessons – I’m really looking forward to it.

\*\*\*\*\*

*To finish off, some light entertainment....*



\*\*\*\*\*



Support WoSP by using a Ritchie’s card when shopping at an IGA store. You can use the card or their phone app, whichever is easier.



Peninsula Fresh Seafood offers seniors a 5% discount for fresh fish each Monday. PFS are in the Dromana Industrial Estate.

**When buying fresh fish from PFS tell them you’re a member of WoSP & let them know WoSP makes their Oyster knives.**