



### Open Day 3<sup>rd</sup> February

It is great to report the Open Day was a success. Although time will tell if the day results in having any new members, the day's activities certainly introduced the club to many residents.

All the Open Day promotion via "word of mouth", flyers, newspaper, newsletter, website & Facebook blogs has been interestingly effective.

#### Key Dates

Bunnings BBQ	2 <sup>nd</sup> March
Picture Framing	5 <sup>th</sup> March
General Meeting	14 <sup>th</sup> March



For instance, the club's Facebook page has 40 members of which only 8 are members of the club. This means the club can communicate with more people than its members.

One of the days highlights was the presentation of a \$500 donation by Brian Leslie and Lorraine Watt, president & treasurer of the Peninsula Old Time Ceilidh Dance Group. When Lorraine & Brian heard WOSP has to move to new premises to make way for the new pool they decided to run a function to raise money to help with moving costs. In thanking Brian & Lorraine, John Bayliss added "I am proud of the club and all its members as they do a fantastic job in contributing to the values of the community".

Josie Mare presented Lorraine with a turned pen after which Lorraine said "I did not know the club had female members but I am very pleased they do. Thank you".

Each Friday afternoon(1.30pm-4.00pm) & evening (4.30pm-8.00pm) the group provides music for old time, new vogue, folk & ballroom dancing at Foote St Dromana.



Other notable visitors were the Lord Mayor, Councillor Bryan Payne (Mayor), Councillor Antonella Celi and liberal candidate for Nepean, Russell Joseph.

WOSP members supported the Open Day in many ways. The woodwork gallery looked very diverse & professional. There were various bowl types, jewelry boxes, toys, tables, coffee tables, pens, bracelets & much more. A carving of an elephant within a mallee root was notable.

The presenters were tireless in answering questions and demonstrating their skills. Gaven amazed onlookers with his meticulous approach in making bracelets. The crowd responded well Josie's pen making presentation. People were amazed that Gordon had so many different unfinished bowls that he was able to polish. Besides having an oil painting of John Bayliss, Roger was able to advise how to inexpensively make picture frames. People loved John Hanley's intarsia figures but seemed intimidated by the time & precision required to complete them.

In addition, members responded to the call for volunteers on the day. Consequently the many hands allowed the day pass

smoothly.

Many thanks to the Sorrento SES, Rosebud CFA & the Classic Car Club members who volunteered their time & helped the day be a success.

## Dust Masks

The club recommends members provide their own safety equipment. This includes goggles, gloves, dust masks, etc. The dust masks generally available tend to be uncomfortable and do not last long.

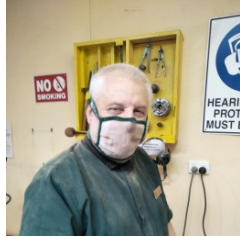


Figure 1 Mike Simpson's Dust Mask

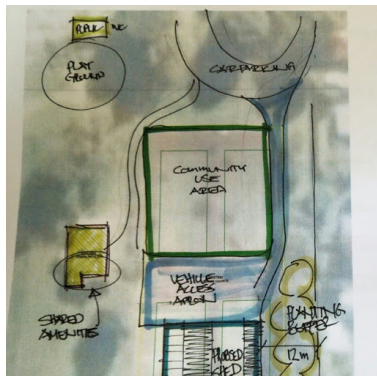
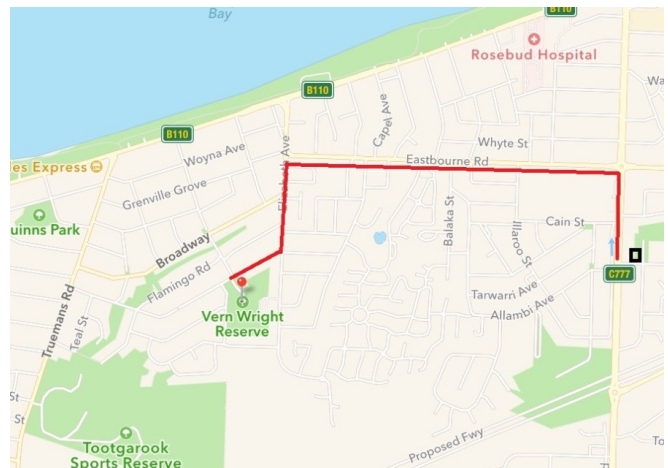
Gaven Davis has placed a list on the noticeboard for the purchase of a more comfortable, durable & washable dust mask. It is the type used by Mike Simpson or John Feeley. The cost is \$49 plus postage. If 10 or more members order a mask the expected postage expense would be approx. \$1.



## Club Relocation

The Woodpecker will aim at keeping all its members up to date with the latest information on the club's relocation.

The new location is Vern Wright Reserve, 2-4 Shearwater Place Rosebud West. Refer to the map for its location compared to our current site. Note: It is not part of the Tootgarook Sports Reserve.



Our workshop will be placed behind a community area and a carpark that will provide easy access.

While the club asked for a 20m x 20m 400, sq mtrs, workshop the council have offered 1 18m x 18m, 360 sq mtrs, workshop saying 6 metres is the normal building multiple. Please do not shoot the messenger as I paraphrased the explanation into my own words.

The council will provide a container for moving timber & machinery to the new site. It is hoped the club will be able to establish teams for various responsibilities, eg decommissioning electrical work, emptying storage sheds, etc. More information will be available at the next general meeting.

## General Meeting 14<sup>th</sup> March ~ Screw-It

The first general meeting for the year will be on 14<sup>th</sup> March. Free sausages are available at 12.30pm. The meeting will start at 1pm and be followed by a speaker from "Screw-It", Rob Low. Refer [screwit.com.au](http://screwit.com.au)

Rob will discuss the Robinson screw head from Canada that is proving to be better than the Phillips head. It is amazing how many screw types are obtainable. **Discounts will be offered on the day.**

- Over 400 different varieties of screws are available including flat head, countersunk, steel lube or zinc plated, pan head, truss head & trim head
- Decking Treated pine green or Brown and stainless steel decking screws
- Brass small sizes for box makers
- Variety of packs woodturners
- Introductory packs for wood and pocket hole
- Table Top Fasteners
- Insty Bit range of drills and tools
- Portable Pocket Hole Jig, Pocket hole screws compatible with Kreg System Round washer and Faceframe

## Old Lathes Auction

No doubt you have seen the new lathes. They have certainly impressed the members that have used them.

The committee plan to auction the old lathes. While they may be old they are still functional & reliable. Refer to the noticeboard for an opportunity to bid on the lathes. There will be a reserve placed on each lathe. If the reserve is not met the committee will look to selling the lathes online via Gumtree or eBay.

## TIP Vouchers

The club no longer receives concessions from the council to dispose of its excess rubbish. The committee would appreciate any member with some unused tip vouchers who would donate them to the club.

They can be placed in an envelope, with your name on it, and left in the office FEES slot.

## Banning Treated Pine

After the recent banning of treated pine in the club it was asked whether MDF should be also banned. Dr. Google was used to research whether MDF was banned or if there was any recommendation for it to be banned.

It was found that while there is dust when it is cut, the dust is not poisonous.

## Missing Timber

Last year the club bought a lot of timber that was earmarked to be used by the toy group. Recently it was found that the timber was considerably diminished. While the committee does not mind when small pieces of timber are taken for your project work, it is very concerned when large amounts go missing.

Please advise the committee if you know where the timber has been used or where the club may find other timber caches.

### Consider these Suppliers.

Pop's Shed ~ 10% to club members	
Onsite Power Tools & Dandy Blade Sharpening Service	
Gary Pye Woodturning Supplies	<a href="http://garypye.com/GPW-Turning-Tools-c44/">garypye.com/GPW-Turning-Tools-c44/</a>
Penn State Industries	<a href="http://pennstateind.com">pennstateind.com</a>
McJing Tools	<a href="http://mcjing.com.au">mcjing.com.au</a>
Laser Engraving & Handmade Gifts	<a href="http://www.customengrave.com.au">www.customengrave.com.au</a> 0425 809 170
Abronet / sandpaper	<a href="http://www.freemanindustries.com.au">www.freemanindustries.com.au</a> (08) 9303 9199
Robot Building Supplies for steel rod	<a href="http://www.robotbuildingsupplies.com.au">www.robotbuildingsupplies.com.au</a> Dromana (03) 5987 1166
Exotic timbers	<b>Mathews Timber</b> <a href="http://www.mathewstimber.com.au">www.mathewstimber.com.au</a> Knoxfield (03) 8756 6333 <b>The Woodsmith Pty Ltd</b> <a href="http://www.thewoodsmith.com.au">www.thewoodsmith.com.au</a> Lusher Road, Croydon
Djarilmari Timber Products	Speciality Craftwoods 08 98482020 Neale & Carla France <a href="http://www.djarilmari.com">www.djarilmari.com</a>
Screw-it	Distributor of Robertson Screws & Tools 1300 551 810 Robert & Ann Low <a href="http://www.screwit.com.au">www.screwit.com.au</a>